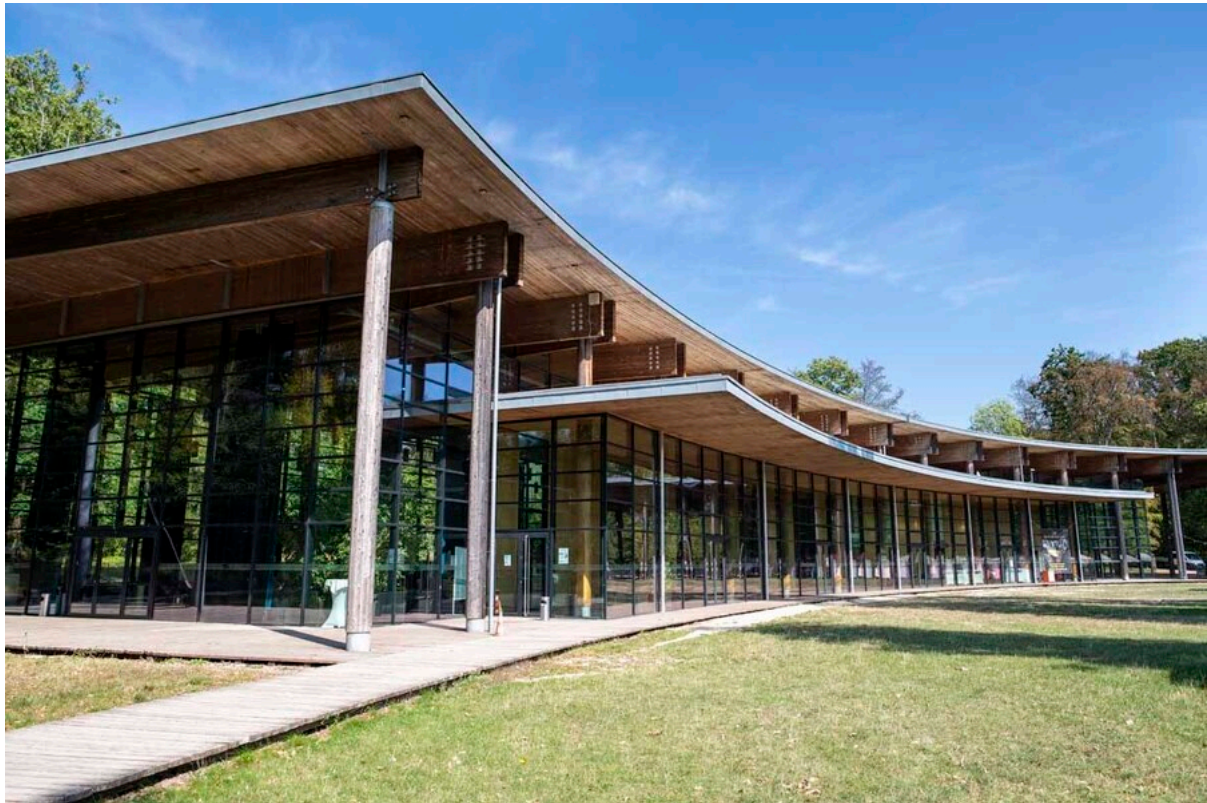


## Short Report



Cloef-Atrium Besucherzentrum mit Bistro | CC BY; Manuela Meyer

## Cloef-Atrium Visitor Center

Cloef-Atrium  
66693 Mettlach-Orscholz

Tel: +49 6865 9115-0  
Fax: +49 6865 9115-120

tourist@mettlach.de  
<https://www.cloef-atrium.de/>

### Welcome!

... to the heart of the border triangle Germany – Luxembourg – France. Barely 10 minutes walk from the viewpoint Cloef, the famous view of the Saarschleife, the landmark of the Saarland, a building with extraordinary architecture in the interplay of wood and glass, a unique connection integrated into nature awaits you: The Cloef-Atrium, conference and visitor center in the climatic health resort Orscholz. Around the Saarschleife you will find the somewhat different "all inclusive" offer. An insider tip for all those who are looking for peace and relaxation, but also for those who want to enjoy their vacation actively. Here you can experience something: boat trips, sightseeing and excursions to the cultural cities on this side and the other side of the border – Trier (40 km), Luxembourg (40 km), Saarbrücken (50 km) or Metz (70 km) have something to offer for everyone.

We look forward to your visit and wish you a pleasant stay.

The bistro is closed.

Accessible tourism in germany more information: <https://bit.ly/3e9bYqZ>

# TEST RESULT

---

for

## Cloef–Atrium Besucherzentrum

66693 Mettlach–Orscholz, Certificate–ID: PA–13298–2025



This offer was classified according to  
the criteria of the nationwide label

**»Tourism for All«**

and, in the period from

**March 2026 – February 2029**

is entitled to use the label

**»Accessibility checked«**

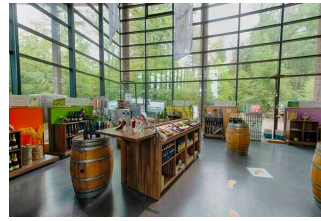
and the associated pictograms

in accordance with the contract.



### Cloef-Atrium Besucherzentrum mit Bistro

CC BY; Manuela Meyer



### Cloef-Atrium Besucherzentrum mit Bistro

CC BY; Manuela Meyer



### Cloef-Atrium Besucherzentrum mit Bistro

©Kevin Ehm



### Cloef-Atrium Besucherzentrum mit Bistro

©DZT / Jens Wegener

---

## Overview

The Cloef-Atrium has in one part of the building a large hall for events with 450 m<sup>2</sup> and a stage, as well as a foyer. In addition, there is a restaurant with 140 seats.

The conference and visitor center offers in the other part of the building on the first floor a tourist information with nature park information office and regiothek, which is open daily from 10:00 to 17:00 (Nov – March: 11:00 to 16:00), as well as a bistro with 80 seats. Directly adjacent you will find 380 parking spaces.

## Accessibility at a glance

- Parking spaces for people with disabilities
- All areas and rooms are accessible without steps.
- All doors and passages are at least 90 cm wide.
- WC for people with disabilities
- Assistance dogs are allowed.

# Information for people with walking difficulties and wheelchair users

All areas relevant for testing meet the quality criteria of the label "**Accessibility certified – accessible for people with walking disabilities and wheelchair users**".

Some **information on accessibility** are listed below. For detailed information please see the evaluation report.

- There are designated parking spaces for people with disabilities 100 and 120 meters away.
- The paths from the parking lots to the visitor center are easy to walk and drive on.
- The building is accessible without steps.
- All evaluated rooms and facilities available to the guests are accessible without steps.
- All evaluated passageways/doors available to the guests are at least 90 cm wide.
- The counter in the tourist information is 80 cm high. There is a communication possibility while in a sitting position.
- There are wheelchair accessible tables available in the Bistro Mirabell (maximum height 80 cm, wheelchair accessible at a height of 67 cm and a depth of 30 cm).
- There are two public toilets for people with disabilities, which are accessible from both sides (minimum 80 cm). The grab rails on the toilet can be folded up.

# Information for people with hearing impairments and deaf people

Some **information on accessibility** are listed below. For detailed information please see the evaluation report.

- There is no alarm.
- There is no audio induction loop system at the counter.
- In the Bistro Mirabell there are tables with bright and glare-free lighting, on which there are no lamps standing or hanging that interfere with the field of vision or eye contact.

# Information for visually impaired and blind people

Some **information on accessibility** are listed below. For detailed information please see the evaluation report.

- Assistance dogs are welcome.
- Outdoor paths usually do not have visually contrasting or tactile walkway boundaries.
- All raised areas that can be used by guests are brightly lit and glare-free.
- Signage is designed in easily legible, high-contrast font.
- The menu in the bistro is not easy to read. There is no menu in large print.
- Information is not available in relief or Braille.

# Information for guests with cognitive impairments

Some **information on accessibility** are listed below. For detailed information please see the evaluation report.

- The name of the atrium is clearly visible from the outside.
- There is no information in easy language.

# Image Gallery

We have put together some photos from the company / offer for you. You can find more photos in the detailed reports.

---



**Parking**

©Lutz Quack



**Parking**

©Lutz Quack



**Public transportation**

©Lutz Quack



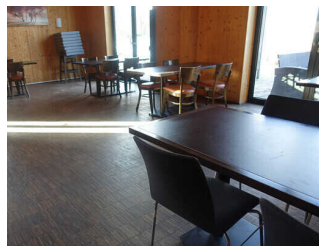
**Tourist-Information**

©Lutz Quack



**Tourist-Information**

©Lutz Quack



**Gastronomie Bistro Mirabel**

©Lutz Quack



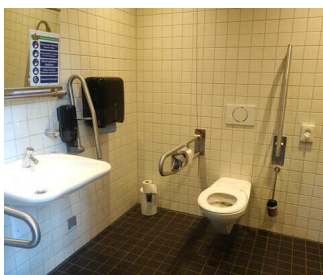
**Gastronomie Bistro Mirabel**

©Lutz Quack



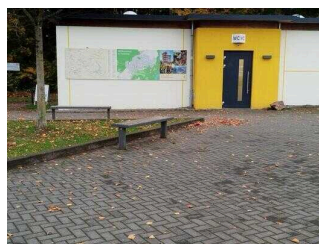
**Gastronomie Bistro Mirabel**

©Lutz Quack



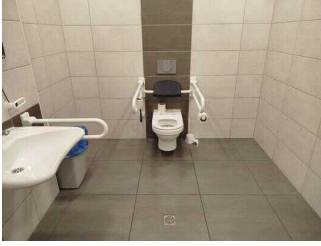
**Public toilet**

©Lutz Quack



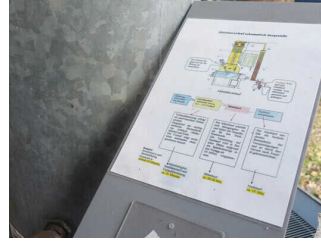
**Restroom at the P1 parking lot**

©Julia Marmulla



**Restroom at the P1 parking lot**

©Julia Marmulla



**Operating elements / guidance system**

©Lutz Quack

## Information on the "Tourism for All" labeling system

All establishments and locations certified with the label "Tourism for All" meet the following quality criteria:

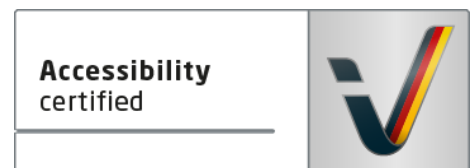
- Data and information on accessibility are collected and checked on site by **external, specially trained evaluators**. The method is not based on self-assessments.
- Data on accessibility is available **in detail** and can be viewed by the guests.
- At least one staff member has successfully passed a **training** on "**Accessibility as a comfort and quality feature**".

### The labeling – explanation of the logos and pictograms

The label "**Information about Accessibility**" indicates that detailed and verified information on accessibility is available for all groups of people.



The label "**Accessibility certified**" is based on "Information about Accessibility". It means that the quality criteria defined for specific groups of people are met partially or completely.



The label "**Accessibility certified**" is available in two requirement levels:

#### "Accessibility certified: partially accessible".

The quality criteria are partially fulfilled for the pictured group of people, i.e. the establishment/location is partially accessible for wheelchair users. The "i" in the pictogram indicates that it is recommended to read again carefully whether the offer meets all (your oder the guest's) individual requirements.



#### "Accessibility certified: accessible".

The quality criteria are fulfilled for the pictured group of people, i.e. the establishment/location is accessible for wheelchair users.



There are defined quality criteria for **seven groups of people** and a **specific pictogram** for each group.

People with walking disabilities



Wheelchair users



People with hearing impairment



Deaf people



People with visual impairments



Blind people



People with cognitive impairments

